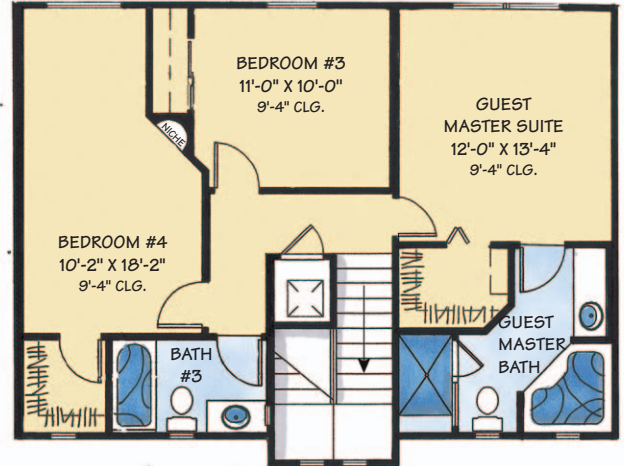


The Bougainvillea

Right



TUSCAN HILLS

FOUR BEDROOM • 3 1/2 BATH
 FIRST FLOOR 1002 SQ. FT.
 SECOND FLOOR 788 SQ. FT.
 TOTAL LIVING 1790 SQ. FT.

COVERED ENTRY 25 SQ. FT.
 GARAGE 235 SQ. FT.
 LANAI 83 SQ. FT.

TOTAL UNDER ROOF 2142 SQ. FT.

