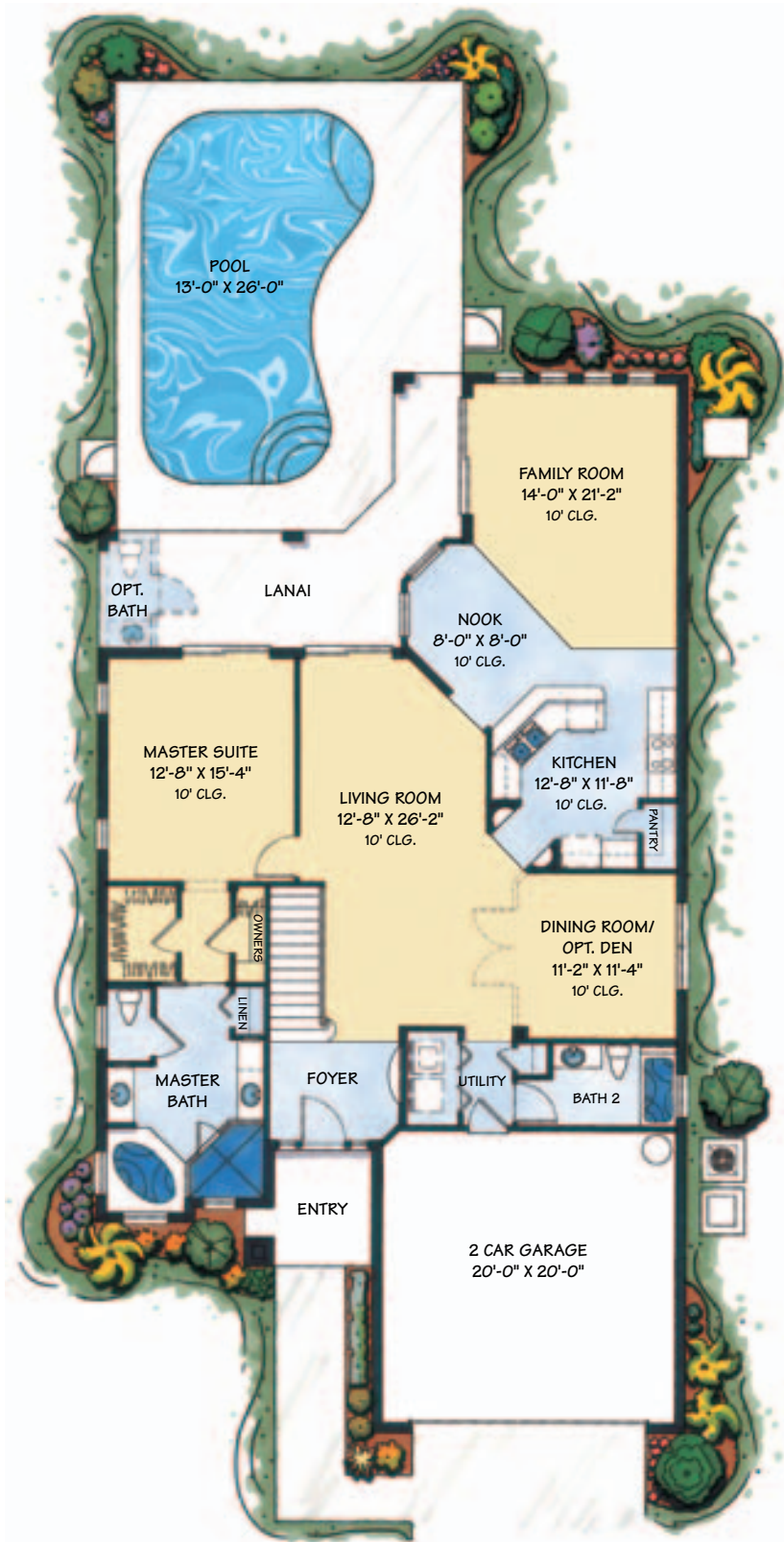


# The Hibiscus 5



## FIVE BEDROOM • 4 BATH

FIRST FLOOR 1714 SQ. FT.  
 SECOND FLOOR 1121 SQ. FT.  
 LIVING 2835 SQ. FT.

GARAGE 440 SQ. FT.  
 LANAI 227 SQ. FT.  
 COVERED ENTRY 61 SQ. FT.

---

TOTAL UNDER ROOF 3563 SQ. FT.



# The Hibiscus 5

---



ELEVATION "A"



ELEVATION "B"



ELEVATION "C"